



**Features & Benefits**

- High energy density and voltage
- High discharge rate capability
- Ideal for medical equipment, memory storage and backup power applications

**Specifications**

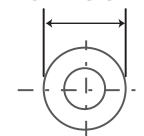
**Capacity:** 3,100 mAh Typical

**Nominal Voltage:** 3.6V

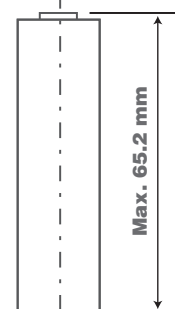
**Weight:** Approximately 45.5g

**Dimensions**

Max. 18.6 mm

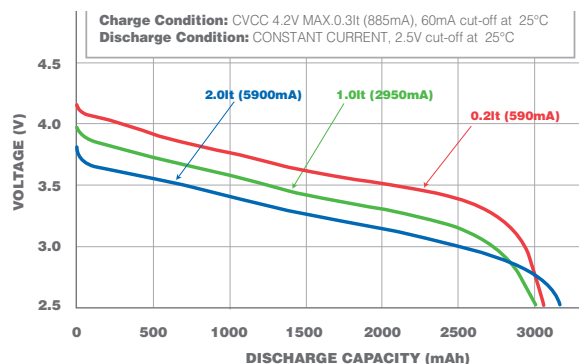


(+)

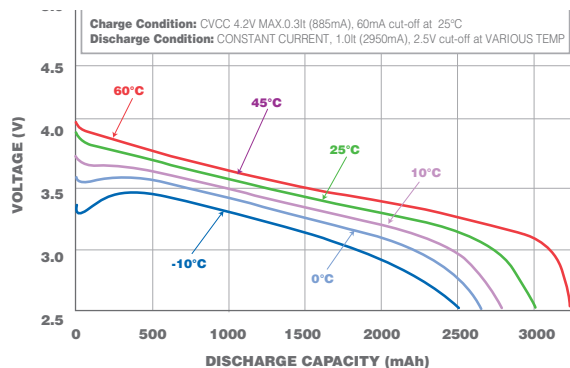


(-)

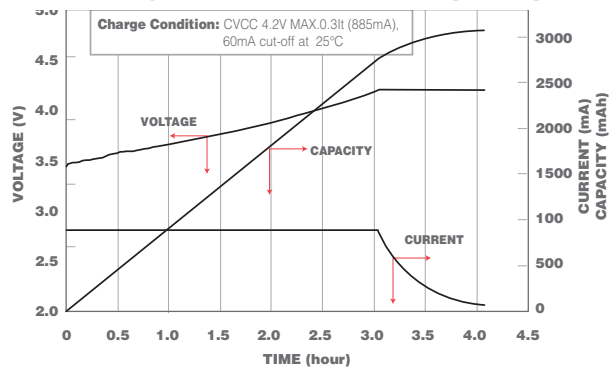
**Discharge Characteristics (25°C)**



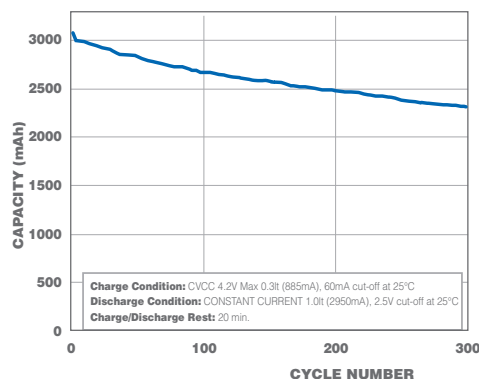
**Discharge Characteristics (various)**



**Charge Characteristics (25°C)**



**Cycle Life Characteristics (25°C)**



The data in this document is for descriptive purposes only and is not intended to make or imply any guarantee or warranty.